

EXHIBIT CALENDAR

American Impressionism: Inside/Out
Through January 5, 2025

M.C. Escher: Infinite Variations
Through January 5, 2025

Order and Illusion: The Geometry of Art
Through January 5, 2025

Dinosaur Train: The Traveling Exhibit
Through January 19, 2025

**Wild Kratts: Ocean Adventure
& Wild Kratts: Creature Power**
January 18—May 11, 2025

100 Years: A Cornerstone of Our Community
January 25—June 1, 2025

**Divine Forms & Earthly Delights:
Reimagining Asian Art**
Opening February 2025

Family programming in RED
Adult programming in BLUE
Scout and Camp programming in GREEN
* = Requires registration/tickets

**For more information and topics/themes,
visit our website or call the Education
Department at 610-371-5850 x255.**

OCTOBER

Yoga Under the Stars*
• Tuesday Evenings | 5:30pm
Fall Series 1 - September 17 – October 22

ARTZ Program*
• October 17 | 10-11am

Sensory Inclusive Hour
• October 17 | 5-6pm

Arboretum Education
• October 22 | 10am

Homeschool Day*
• October 23 | 10am-12pm

Dinner Series*
• October 24 | 5:30pm

Senior Series
• October 25 | 1pm

Trick or Treat at The Museum*
• October 26 | 9am-11am



Address Service Requested

NON-PROFIT
ORG.
U.S. Postage
PAID
READING, PA
PERMIT NO. 598

Rocky Horror Picture Show*
• October 31 | 5, 7, and 9pm

Museum Discovery Hour
• Select Saturdays | 1-2pm

NOVEMBER

Yuletide Holiday Market
• November 2 | 10am-3pm
(Rain date: November 9)

Sensory Inclusive Hour*
• November 4 | 10-11am

Homeschool Day*
• November 6 | 10am-12pm

**Mathematics and the Art of M.C. Escher
Lecture***
November 7 | 6:30pm

STEM Sunday: Athletics and Ales*
• November 10 | 12-3pm

Yoga Under the Stars*
Fall Series 2 - November 12– December 17
• Tuesday Evenings | 5:30pm

Art History Short Course Session 1*
• November 12 | 1:30-3pm

Sensory Inclusive Hour
• November 13 | 5-6pm

Purchase Party*
• November 14 | 5:30pm

Arboretum Education
• November 19 | 10am

Art History Short Course Session 2*
• November 19 | 1:30-3pm

Homeschool Day*
• November 20 | 10am-12pm

ARTZ Program*
• November 21 | 10-11am

Senior Series
• November 22 | 1pm

Arboretum Fall Cleanup
• November 23 | 9am-12pm

Art History Short Course Session 3*
• November 26 | 1:30-3pm

Museum Discovery Hour
• Select Saturdays | 1-2pm

DECEMBER

Art History Short Course Session 4*
• December 3 | 1:30-3pm

Homeschool Day*
• December 4 | 10am-12pm

ARTZ Program*
• December 5 | 10-11am

Sensory Inclusive Hour*
• December 7 | 10-11am

Pictures with Santa*
• December 8 | 9-11am

Sensory Inclusive Hour
• December 12 | 5-6pm

Arboretum Education
• December 17 | 10am

Homeschool Day*
• December 18 | 10am-12pm

Senior Series
• December 20 | 1pm

Noon Years Eve Celebration*
• December 31 | 9-12pm

Museum Discovery Hour
• Select Saturdays | 1-2pm

Looking ahead: Save these dates in 2024/2025 to attend our most popular annual events and programs!

Dinner Series 10/24 • Trick or Treat 10/26 • Purchase Party 11/14 • Pictures with Santa 12/8 • Noon Years Eve 12/31
Wild Kratts Member Preview and Brunch 1/18 • Golfin' in the Galleries 2/14 • Summer Camp 2025 registration opens for Museum Members 3/1

For details on events and updates to the calendar, visit: readingpublicmuseum.org

MUSEUM ROAD

FALL 2024

A publication of The Reading Public Museum • Neag Planetarium • Arboretum



THE TRAVELING EXHIBIT

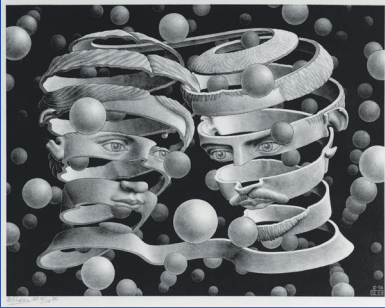


INSIDE THIS ISSUE:

- Purchase Party
- Pictures with Santa
- Noon Years Eve Celebration



CURRENT EXHIBITS



M.C. Escher (Dutch 1898-1972), *Bond of Union*, 1956, lithograph, 9 6¼ x 13 15¼ inches. M.C. Escher images are copyright of the M.C. Escher Co.

M.C. Escher: Infinite Variations Now through January 5, 2025

This mesmerizing exhibition brings the work of world-renowned artist, M.C. Escher, to Reading this Fall. *M.C. Escher: Infinite Variations* spans the Dutch artist's entire career with more than 150 works from a private collection. Visitors will see woodcuts, lithographs, etchings, blacklight posters, and even a lithography stone.

Order and Illusion: The Geometry of Art Now through January 5, 2025

Including over 40 works from The Museum's Permanent Collection, *Order and Illusion: The Geometry of Art* will explore the evolution of geometric art from the 1960s to the present day.



Leo Amino (American, 1911 – 1989), *Refractal #169*, 1982, cast acrylic, 5 ¾ x 5 ½ x 7 ¾ inches, Gift, Julie Amino, 1998.18.2.



Daniel Garber (American, 1880 – 1958), *Goat Hill*, c. 1929, oil on canvas, 50 x 60 inches, Museum Purchase, 1930.131.1.

American Impressionism: Inside/Out Now through January 5, 2025

The show examines plein air landscapes (or plein air-inspired works) that capture the fleeting effects of light and atmosphere in all four seasons, and paintings set in everyday interiors—many featuring thoroughly modern women in contemplation, reading, writing, engaging in needlework, drinking, or dressing.

Dinosaur Train: The Traveling Exhibit Now through January 19, 2025

Come join a curious Tyrannosaurus Rex named Buddy who travels the world to discover everything there is to know about dinosaurs! Based on the PBS® KIDS series *Dinosaur Train*, the exhibition embraces and celebrates the fascination kids have with both dinosaurs and trains.



PURCHASE PARTY

AT THE MUSEUM

November 14 | 5:30pm

delicious food catered by Dundore & Heister. The Purchase Party is a fun event that creates an atmosphere of community and is an excellent opportunity to make your opinion count and interact with Museum staff in an intimate setting.

Purchase your ticket on our website at readingpublicmuseum.org/purchase-party.

Member tickets: \$45, Non-member tickets: \$55

Please contact Sydney Ernst with any questions at sydney.ernst@readingpublicmuseum.org

November is for casting votes! RPM is hosting its 10th Annual Purchase Party on Thursday, November 14, at 5:30pm. This popular event encourages attendees to vote for their favorite candidate among a group of artworks. Attendees use "Mengel Voting Dollars" to vote for their favorite painting. At the end of the night, the painting with the most Mengel Voting Dollars (i.e. votes) will be purchased by The Museum. This year's theme is Latinx Artists and supports RPM's mission of growing and diversifying the collection. Throughout the event, attendees will also enjoy a selection of fine wines and

Elevate Your Holiday Party at the Reading Public Museum!

Ready to make this year's staff holiday party truly unforgettable? Look no further! Host your celebration at the Reading Public Museum and treat your team to an experience they will love and remember for years to come.

Why Choose Us?

- **Stunning Venues:** Celebrate among breathtaking art in our Museum galleries or dance the night away under the stars in the Neag Planetarium.
- **Effortless Planning:** We've simplified the process into just 4 easy steps:
 1. Pick your preferred date and location.
 2. Contact one of our top-tier caterers for a delicious, stress-free experience.
 3. Plan your event with our dedicated RPM staff.
 4. Enjoy the night of your dreams!

Whether you are hosting an intimate gathering or a large group, the Reading Public Museum will ensure your holiday party is nothing short of spectacular.

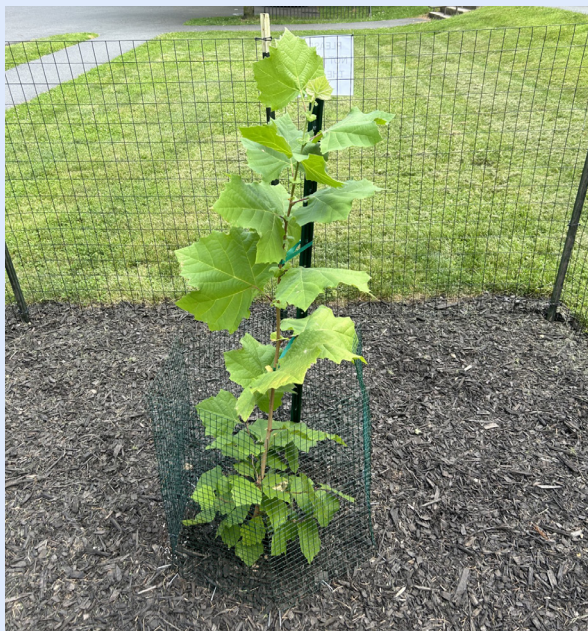
Don't Wait! Limited dates available! Contact Kara Seawell at kara.seawell@readingpublicmuseum.org or 610-371-5850 x234.



NASA Selects The Reading Public Museum to Receive an Artemis I Moon Tree

Honoring Space Exploration with a Living Legacy

We are thrilled to announce that the Reading Public Museum has been selected by NASA to receive an Artemis I Moon Tree! This prestigious recognition is part of NASA's Artemis program, which seeks to return humans to the Moon and lay the foundation for future exploration of Mars. We are deeply honored to be part of this historic connection to space exploration and scientific discovery.



What is a Moon Tree?

Moon Trees are grown from seeds that have traveled to the Moon and back. This tradition began in 1971 during the Apollo 14 mission, when astronaut Stuart Roosa carried hundreds of seeds with him as he orbited the Moon. Upon their return to Earth, these seeds were planted across the United States, becoming known as Moon Trees—living symbols of the bond between Earth and space. Continuing this legacy, NASA's Artemis mission sent a new generation of seeds into space. After their return, these seeds were carefully germinated by the U.S. Forest Service and distributed to select institutions, including the Reading Public Museum.

Educational and Community Impact

The Moon Tree will serve as the centerpiece for new educational programs, offering visitors a rare opportunity to learn about space exploration, environmental science, and the Artemis mission. The Museum is developing a

range of activities and events centered around the Moon Tree, from school programs to public talks, ensuring that this extraordinary living symbol becomes a cherished part of our community. In addition, The Museum's Arboretum—already a sanctuary of natural beauty—will be further enriched by the presence of the Moon Tree.

Looking to the Future

As NASA's Artemis mission opens the door to future exploration of the Moon and Mars, the Reading Public Museum's Moon Tree will stand as a living testament to human achievement and curiosity. It will inspire the next generation of astronauts, engineers, scientists, and dreamers, reminding them that exploration knows no bounds.

The Moon Tree was planted on The Museum's grounds in late spring 2024. A public dedication and celebration is planned for May 2025.

For updates on the Moon Tree's dedication and related programming, please visit our website.



A Night to Remember: The 12th Annual Night at The Museum

For the twelfth year in a row, the community of supporters surrounding RPM showed up in a style for Night at The Museum. The crowd was bedecked in classic black and white, extending the monochromatic illusions that fill the walls in the special exhibition *M.C. Escher: Infinite Variations*. The success of this fundraiser has an incredible impact on The Museum's mission and ability to inspire and welcome the thousands of visitors received every year from children to seniors. RPM is grateful to our wonderful sponsors for ensuring this accomplishment:



Platinum: The Stevens & Lee Companies

Gold: Haverford Trust

Silver: Lindenwold Advisors, Penn State Health St. Joseph Medical Center

Bronze: Breidegam Family Foundation, RKL, Tompkins Community Bank, Tower Health

Copper: Burkey Corporation, Capital Blue Cross, Highmark Blue Shield, Masano Bradley, Reading School District, Dr. Seth and Barbara Rosenzweig, Securitas, Dr. Anna Weitz

THE ROCKY HORROR PICTURE SHOW

Rocky Horror Picture Show Movie Screening

October 31 | shows at 5, 7, and 9pm

Looking for something fun to do this Halloween? Let's Do The Time Warp Again at the Neag Planetarium! Grab a seat in the region's most unique theater to participate in *The Rocky Horror Picture Show*. The showings will be held under the dome in the Neag Planetarium. Seating is limited. Please keep in mind, NO WATER, GLITTER, LIGHTERS, WET FOOD, or ANIMALS will be allowed. There will be prop kits available for pre-order. Please visit our website at www.readingpublicmuseum.org/the-rocky-horror-picture-show for ticket details and to register or email sydney.ernst@readingpublicmuseum.org.

Pricing:

\$15 per ticket, \$5 per prop bag




Yuletide Holiday Market

November 2 | Stone Terrace Tent and Arboretum

This year, on Saturday, November 2, RPM will host our first Yuletide Holiday Market in the Stone Terrace Tent and the paths of the Arboretum. Local vendors, artists, and creators will sell their wares, and community organizations will engage visitors. With a chill in the air, this will be the perfect event to enjoy the Arboretum, support local businesses, and find unique holiday gifts. The event will be free to attend, and we encourage visitors to step inside The Museum to complete this idyllic fall day. Rain date is November 9. For any questions regarding the event, contact Sydney Ernst at sydney.ernst@readingpublicmuseum.org.

For a complete list of vendors visit our website at www.readingpublicmuseum.org/yuletide-holiday-market.

FALL 2024 EDUCATION CALENDAR

Reading School District Families: programs with this  symbol include special benefits just for you! To learn more visit our website at www.readingpublicmuseum.org/RSDbenefits

For the Community

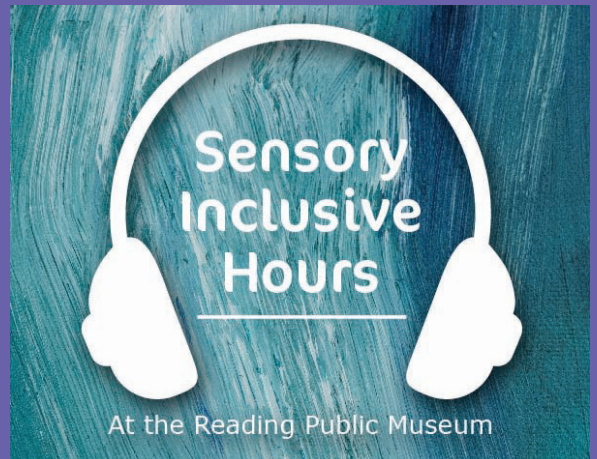
Sensory Inclusive Hours

Our sensory inclusive Museum hours are a special time designed for guests who prefer a quieter, more relaxed environment. During these hours, we make adjustments throughout The Museum to create a calm and welcoming atmosphere for individuals with varying sensory needs.

These dedicated hours are a time for everyone to enjoy The Museum at their own pace, exploring the exhibits in a serene and supportive setting. We invite you to join us and experience The Museum in a way that best suits your needs.

Fall 2024 Sensory Hours:

- October 17 | 5-6pm
- November 4 | 10-11am
- November 13 | 5-6pm
- December 7 | 10-11am (Planetarium – Featuring *Let it Snow*)
- December 12 | 5-6pm (Planetarium – Featuring *Let it Snow*)



Embark on a Geocaching Adventure in our Arboretum!

Our Arboretum is now home to several exciting new geocaches, including a special Dinosaur Train-themed cache that ties in perfectly with our latest exhibit! Get ready to explore the great outdoors, hunt for hidden treasures, and dive into a world of adventure. Whether you're a seasoned geocacher or new to the game, there's something fun for everyone.

Don't miss out—become a member for free at geocaching.com and join the hunt today! Who knows what hidden surprises await?

Seasonal Celebrations



Trick or Treat at The Museum October 26 | 9-11am

Join Museum Educators and other community partners as we celebrate Halloween with a safe trick or treating event at The Museum. Children will receive Halloween and Fall themed crafts to take home in addition to coupons and snacks provided by our sponsors as they travel to the various treat stations throughout our galleries. Families will also have an opportunity to meet Buddy the Dinosaur!

Registration is required for this event. Please visit our website to register.

Pricing:

Museum Members - FREE

Non-Members – Activities FREE with paid Museum Admission

Pictures with Santa December 8 | 9-11am

Join Museum Educators and community partners as we celebrate Christmas and other winter cultural celebrations. Families will be able to visit and take pictures with Santa and Mrs. Claus. Children will receive crafts to take home in addition to coupons and snacks provided by our sponsors as they wait in line and explore The Museum. Community groups participating in our Yuletide Around the World tree display will also be present to talk about unique holiday traditions from around the world.

Registration for this event is required. Please visit our website to register.

Pricing:

Museum Members - FREE

Non-Members – Activities FREE with paid Museum Admission



Noon Years Eve Celebration December 31 | 9am-12pm

Join Museum Educators and community partners as we ring in the New Year! Families will be able to create some fun props and noisemakers that are commonly used for this holiday. Children will also be able to dance the wait away as we count down to the noon hour. At that time, we will have a balloon drop in the Neag Planetarium. It is sure to be a great time!

Registration for this event is required. Please visit our website to register.

Pricing:

Museum Members - FREE

Non-Members - Activities FREE with paid Museum Admission

Learning Opportunities



Homeschool Day

Every Other Wednesday | 10am-12pm

Join educators from The Museum for an exciting morning filled with special tours and hands-on projects that the whole family can enjoy! Programs are designed for elementary school age students (younger and older siblings welcome to participate).

- October 23
- November 6
- November 20
- December 4
- December 18

Registration is required. Register with Mary at mary.johnson@readingpublicmuseum.org. Deadline to register is the Monday prior to each program.

Pricing:

Museum Members - \$15 (includes 1 adult and 1 child), \$5 for each additional adult or child.

Non-Members - \$20 (includes 1 adult and 1 child), and \$7 for each additional adult or child. Includes Museum Admission for the day of the program. Pre-register for 6 classes and get the 7th free! Payment is due at time of registration to qualify.



Arboretum Education | 10am

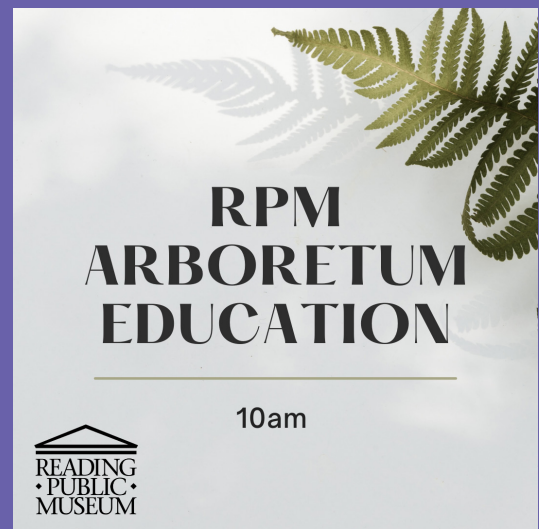
Join us in the Arboretum for a variety of learning opportunities presented by Master Gardeners, avid horticulturists, and other industry specialists.

- October 22 | **Indigenous Approaches to Conservation** - presented by Amanda Funk, Citizen of the Potawatomi Nation from Widoktadwen Center for Native Knowledge (in the Neag Planetarium)
- November 19 | **Enviroscape: A Model of Real-World Ecosystems and Watersheds** - Presented by Michael Griffith
- December 17 | **Winter Solstice Folklore: The Rituals, Birds, Bees, and Veggies of Yuletide and the 16 Nights that Follow** - Presented by Dave Kline

Pricing:

Museum Members - FREE

Non-Members - Activities FREE with paid Museum Admission



Senior Series

4th Friday of the Month | 1pm

You are never too old to learn! Come to The Museum for this senior-friendly program. The program runs on the 4th Friday of the month at 1pm unless otherwise noted. **All documentaries will be shown in The Neag Planetarium. Guests of all ages welcome.

- **October 25 - Virtual Lecture - Vision and the Artist – presented by Professor William Ayliffe FRCS PhD, Emeritus Professor of Physics at Gresham College**
- **November 22 - A New Lens: The Impact of Innovation and Society on American Impressionist Art - presented by Rebaka Birch**
- **December 20 - Documentary Screening - The Fantastic World of M.C. Escher**

Pricing:

Museum Members - FREE

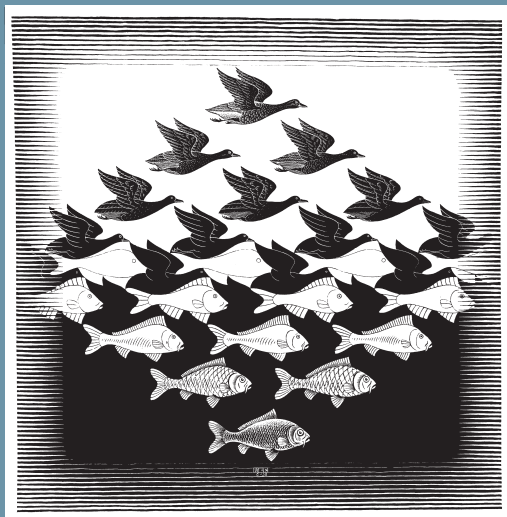
Non-Members – Activities FREE with paid Museum Admission

Mathematics and the Art of M.C. Escher

November 7 | 6:30pm

Presented by Doris Schattschneider

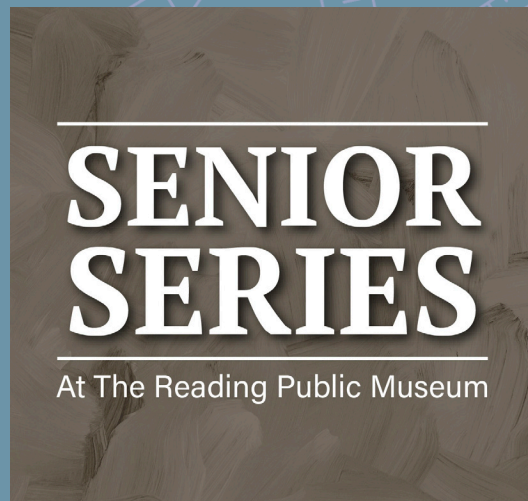
The word SYMMETRY has many meanings. Although it has a technical definition in mathematics and science, it has other meanings in art and architecture, still others in literature and fields concerned with aesthetics. Symmetry is embedded in Escher's art in so many ways—his work is the perfect medium through which to explore many aspects of symmetry.



M.C. Escher (Dutch 1898-1972), *Sky and Water I*, 1938, woodcut, 17 1/16 x 17 3/16 inches. M.C. Escher images are copyright of the M.C. Escher Co.

Doris Schattschneider is Professor Emerita of Mathematics at Moravian University in Bethlehem, Pennsylvania. Combining her dual interests in mathematics and art, she has become internationally known for her work with tilings of the plane and her many publications about M.C. Escher's art. Her book *M.C. Escher: Visions of Symmetry* explores how Escher made and used his drawings of tessellations in his prints as well as in commissions for tiled pillars and facades, painted murals, intarsia woodwork, and more. In collaboration with graphic designer Wallace Walker, she designed polyhedral forms covered with Escher tessellations that have been published as M.C. Escher Kaleidocycles. She has been active in the Mathematical Association of America, serving as Editor of *Mathematics Magazine*, and received their national award for distinguished teaching. She is especially interested in making mathematics visual, and served as Geometer on the project that produced the software *The Geometer's Sketchpad*. She is a Fellow of the American Mathematical Society.

This program is free, however, registration is required. Please email wendy.koller@readingpublicmuseum.org to reserve your seat.



STEM Sunday: Athletics and Ales

November 10 | 12-3pm at the Neag Planetarium

Join us for an unforgettable day at STEM Sunday: Athletics and Ales! Kids will love our exciting science activities and crafts, while adults (21+) can enjoy beer and wine samples. Experience exciting athletic science demonstrations. Fun for all ages awaits—see you there!

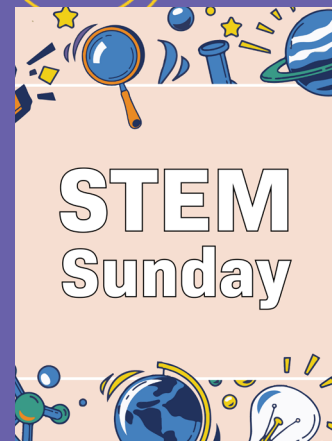
Registration opening soon! Check our website for more information.

Pricing:

\$15 for Adult ticket

\$25 for 1 Child & 1 Adult ticket

\$10 for each additional Child or Adult ticket



Art History Short Course

The Beauty of American Impressionism

Tuesdays, November 12, 19, 26, & December 3 | 1:30-3pm

*American
Impressionism*
— Inside/Out —

Immerse yourself in the luminous world of American Impressionism with a course that offers an unparalleled opportunity to explore this vibrant art movement. This exclusive course is being co-taught by Curator of Arts and Civilizations, Scott Schweigert & Executive Director, Geoffrey Fleming. This course is perfect for art enthusiasts, history buffs, students, and anyone interested in deepening their appreciation of American Impressionism.

Registration is required. To register please email Wendy at wendy.koller@readingpublicmuseum.org.

Pricing (includes all 4 sessions):

Museum Members - \$120

Non-Members - \$180

Native American Heritage Month Film Screening

Friday, November 15, 2024 | 1pm

Join The Museum and Widoktadwen Center for Native Knowledge for a special screening of *s-yéwyáw Awaken* - Stories of hope and homecoming intersect as changemakers Ecko Aleck of the Nlaka'pamux Nation (Lytton), Alfonso Salinas of the shíshálh Nation (Sunshine Coast) and Charlene SanJenko of Splatsin of the Secwépemc Nation (Shuswap) learn and document the teachings of their Elders.

Pricing:

Museum Members - FREE

Non-Members - Activities FREE with paid Museum Admission



Museum Discovery Hours

Select Saturdays | 1-2pm

On select Saturdays from 1 to 2pm, Museum visitors will have the opportunity to participate in free hands-on activities, experiments, and tours.

- **October Discovery Hours** – Featuring topics focusing on the life and work of M.C. ESHER
- **November Discovery Hours** – Featuring topics focusing on American Impressionism
- **December Discovery Hours** – Featuring topics focusing on *Dinosaur Train: The Traveling Exhibit*



Lunch & Learn

Looking for an enriching experience that's fun for all ages? Our Lunch & Learn program is the perfect way to spend your afternoon! Enjoy a provided lunch then dive into engaging educational activities and explore fascinating topics.

Check our website for upcoming dates and themes!

Pricing:

Members - \$12/person; \$10 for each additional child or adult (lunch is included in price)

Non-Members - \$16/person; \$11 for each additional person (lunch is included in price)

Bus Trip

Paris 1874: The Impressionist Movement at the National Gallery

December 11 | Bus departs at 7am and returns at approximately 6:30pm

Join us for a delightful day trip to Washington, D.C. as we visit the National Gallery of Art to view the once in a lifetime exhibit - *Paris 1874: The Impressionist Movement*. With only 2 worldwide stops, this exhibit steps into the world of Monet, Degas, Renoir, and other trailblazing artists who revolutionized art in the late 19th century. As we explore this captivating collection, you'll gain insight into the vibrant scenes of Parisian life and the innovative techniques that defined the Impressionist movement.



After soaking in the masterpieces, we'll head to Il Canale, a charming Italian eatery nestled in Georgetown, for a late lunch. Savor authentic Italian dishes with fresh ingredients, from wood-fired pizzas to homemade pastas, in a warm and inviting atmosphere.

After soaking in the masterpieces, we'll head to Il Canale, a charming Italian eatery nestled in Georgetown, for a late lunch. Savor authentic Italian dishes with fresh ingredients, from wood-fired pizzas to homemade pastas, in a warm and inviting atmosphere.

This unforgettable experience combines world-class art with delicious cuisine, making it the perfect cultural escape. Let us handle the travel while you enjoy a day filled with beauty, history, and flavor!

Reservations required, deadline is December 1. Reserve online or by emailing Wendy at wendy.koller@readingpublicmuseum.org.

Pricing:

Includes transportation, admissions, and lunch (The National Gallery is NOT permitting reservations, reserved times, or tickets for this exhibition- participants will have the opportunity view the exhibit on their own between 10am and 1:30pm)

Museum Members - \$180 per person

Non-Members - \$200 per person

For the Mind and Body

Yoga Under the Stars

Tuesday Evenings | 5:30-6:30pm

Led by a certified instructor, these yoga sessions in the Neag Planetarium provide gentle yoga relaxation under the stars.

- Fall Series 1 - September 17 – October 22
- Fall Series 2 - November 12 – December 17

Registration is required. Email Wendy at wendy.koller@readingpublicmuseum.org to reserve.

Pricing:

Museum Members - \$30 per series

Non-Members - \$48 per series

Register for both series and save — \$50 for Members; \$80 for Non-Members.



ARTZ @ RPM

ARTZ @ RPM invites people living with Alzheimer's Disease and other dementia-related conditions, along with their care partners, to enjoy monthly visits to the Reading Public Museum. ARTZ Philadelphia's welcoming and highly-trained facilitators help create safe, comfortable spaces in which small groups of people with dementia, their families, and their companions can come together, free from judgment, in intimate conversations inspired by art where there are no wrong answers and all are free to be themselves, in the moment.

- October 17
- November 21
- December 5

For more information or to register please visit: www.artzphilly.org/artz-at-the-museum/.

Scouts at The Museum

SCOUTS! Are you looking to earn badges and complete adventures in a NEW and exciting way?! If so, then you need to check out the scouting programs at The Reading Public Museum! For nearly a decade The Museum has been a place for scouts to experience the wonders of nature, the universe up-close, exceptional art, and ancient history and cultures unlike anywhere else. Every year hundreds of Girl Scouts, Cub Scouts, and Scouts BSA flock to our council-wide and private programming covering a plethora of topics all while earning the accompanying awards. We would like to take this time to officially WELCOME all scouts to The Museum family and say that we look forward to meeting you at The Museum! For all inquiries, including private scheduling, and event registration, please contact Rebeka Birch at rebeka.birch@readingpublicmuseum.org or visit our website.

Scheduled Upcoming Scouts Events:

- **October 12 – 10am-1pm** – GSUSA Invention Station Workshop (Daisy & Brownie Scouts earn appropriate Think Like an Engineer Journey Award) - \$25/scout, \$6/adult
- **October 27 – 9am-12pm** – GSUSA Water Wonders 101 Workshop (Brownie Scouts earn WOW! Wonders of Water Journey Awards) - \$35/scout, \$6/adult
- **November 16 – 9am-12pm** – BSA Cub Scout Day at RPM Session #1: Space Exploration - \$25/scout, \$12/adult (register at <https://scoutingevent.com/528-86783>)
- **November 16 – 1pm-4pm** – BSA Cub Scout Day at RPM Session #2: Forensics - \$25/scout, \$12/adult (register at <https://scoutingevent.com/528-86783>)
- **November 17 – 2pm-5pm** – GSUSA Nature’s Shapes Studio Workshop (Daisy, Brownie, & Junior Scouts earn appropriate Shapes in Nature badge) - \$25/scout, \$6/adult
- **November 22-23 – 6pm-8:30am** – GSUSA Escher’s Engineered Dreams Overnight (Junior, Cadette, Senior, & Ambassador Scouts earn exclusive RPM STEM Patch) - \$50/scout, \$12/adult
- **November 23 – 8am-12pm** – ALL SCOUTING ORGANIZATIONS – Arboretum Fall Clean-Up Volunteer Opportunity – scouts under 18 must be accompanied by an adult - registration required – contact Rebeka at rebeka.birch@readingpublicmuseum.org
- **December 14 – 2pm-5pm** – GSUSA Bot Builders Lab Workshop (Junior & Cadette Scouts earn appropriate Robotics badge sets) - \$35*/scout, \$6*/adult
- **December 14-15 – 6pm-8:30am** – GSUSA Midnight Masterpieces Overnight (Junior, Cadette, Senior, & Ambassador earn exclusive RPM Art Patch) - \$50*/scout, \$12*/adult

***book both same-day events and save \$5/scout & \$5/adult**

Cost includes: appropriate badge/patch where applicable, return admission passes to The Museum, materials & instruction. Overnights also include a light continental breakfast and an “I Slept at The Museum” event patch.

Journeys do not include “Take Action Project” requirements – those must be completed outside of the workshop/overnight.





Annual Arboretum Fall Cleanup

November 23 | 9am-12pm

As the vibrant colors of autumn fade, The Museum is calling on the community to join its annual fall cleanup. This event is an ideal way for new and seasoned volunteers to enjoy the outdoors while making a difference.

The fall cleanup is a cherished tradition at The Museum. Volunteers will rake leaves and pick up debris to prepare The Museum's award-winning grounds for the colder months. Volunteers are encouraged to bring their own rakes and gloves, and volunteers under 18 years of age should bring an adult. More than anything, participants should bring their enthusiasm and energy to make the cleanup a success.

To RSVP for you or your group, please contact MaryAnn at mareed520@gmail.com. Come help us put the grounds "to bed for the winter." We can't wait to see you there! Cleanup raindate: Sunday, November 24, 9am-12pm.

Letter from the Director

Well, it has been a beautiful start to the final quarter of the year – cool, crisp mornings followed by warm, sunny days, it really has been delightful. The Arboretum will shortly begin turning lovely shades of orange and red, with little kids chasing after the swirling and falling leaves as autumn truly begins.

Inside The Museum, it is a time of change, with old favorites departing and new exhibitions taking their place. As we say goodbye to a world filled with mythical Dragons, we will welcome an exceptional exhibition featuring the works of the famed printmaker, M. C. Escher. What college dorm room was complete without one of his complicated and often confusing staircases or flying duck posters? As we say farewell to *Amazing Castle*, we welcome the ever-popular *Dinosaur Train*, based upon the award-winning children's television program created for PBS. The number of children who have seen the sign for this show can barely hold back their excitement. Watch for special programming initiatives around this exhibition!



Geoffrey K. Fleming

There are two additional exhibitions to which I want to draw your attention. *American Impressionism: Inside/Out* features work from the Philadelphia Museum of Art's permanent collection compared and contrasted with works from RPM's permanent collection. If you are looking for the nicest impressionist works you could imagine, then you need to see this show. Some of the paintings we have included from Philadelphia have not been on display publicly in years, making this a special moment to see these works for the very first time. The second show, *Order and Illusion*, ties in geometric works on paper from The Museum's collection to the Escher show, providing a nice, colorful complement to what you will see in the main show.

As the end of the year begins to get closer, please consider RPM in your end-of-year gift planning; the stronger we make the Foundation and The Museum, the more we will be able to do for our community.

See you wandering The Museum soon!

Geoffrey K. Fleming

In the Neag Planetarium

Sunday Shows October–November

1pm - *The Zula Patrol: Down to Earth* - (ages 5 and up) | 25 min
2pm - *One World, One Sky: Big Bird's Adventure* - (ages 3 and up) | 32 min
3pm - *Forward to the Moon* - (ages 10 and up) | 25 min
4pm - *MARS: The Ultimate Journey* - (ages 12 and up) | 25 min

Weekday Shows October–November

2pm - *One World, One Sky: Big Bird's Adventure* - (ages 3 and up) | 32 min
3pm - *Forward to the Moon* - (ages 10 and up) | 25 min
4pm - *MARS: The Ultimate Journey* - (ages 12 and up) | 25 min

Sunday Shows December

1pm - *Let it Snow* - (All ages) | 30 min
2pm - *One World, One Sky: Big Bird's Adventure* - (ages 3 and up) | 32 min
3pm - *Season of Light* - (ages 5 and up) | 30 min
4pm - *Let it Snow* - (All ages) | 30 min

Weekday Shows December

2pm - *One World, One Sky: Big Bird's Adventure* - (ages 3 and up) | 32 min
3pm - *Season of Light* - (ages 5 and up) | 30 min
4pm - *Let it Snow* - (All ages) | 30 min

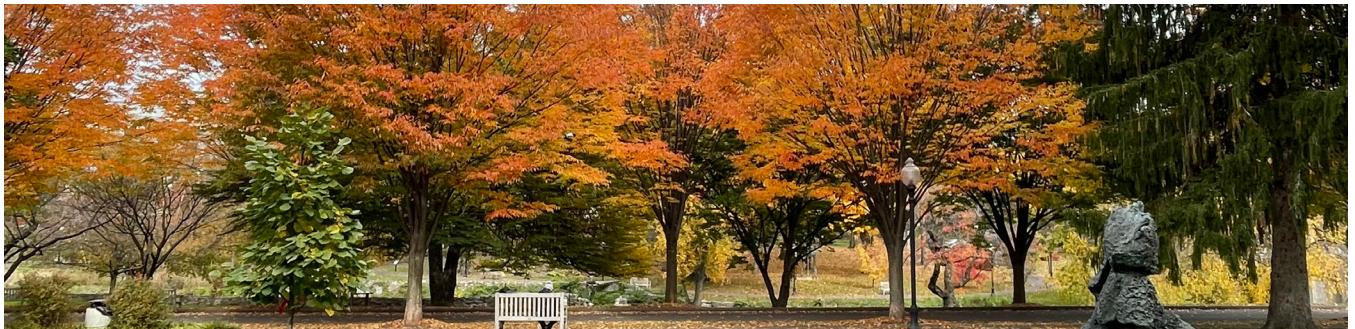
Floyd Final Fridays:

11/29 (No Floyd Final Friday in October)

7pm - *Pink Floyd: Wish You Were Here* - (ages 12 and up) | 45 min
8pm - *Pink Floyd: Dark Side of the Moon* - (ages 12 and up) | 42 min
9pm - *Pink Floyd: The Wall* - (ages 12 and up) | 65 min

12/27

7pm - *Let it Snow* - (All ages) | 30 min
8pm - *Pink Floyd: Dark Side of the Moon* - (ages 12 and up) | 42 min
9pm - *Pink Floyd: The Wall* - (ages 12 and up) | 65 min



More programs listed on back page.

For details on events and updates to the calendar, visit: readingpublicmuseum.org

What's new at The Museum? Easily bookmark our website using the upper right hand corner on your browser for quick access to The Museum's website and stay up-to-date on any pop-up programs or event changes.

Visit: readingpublicmuseum.org

Join Your Museum Today!

The Reading Public Museum is dynamic and ever-changing, offering diverse exhibitions all year long! Temporary exhibitions featuring science and art combine with our permanent galleries to offer you an engaging experience every time you visit. As a Member, every visit to The Museum and Neag Planetarium is FREE! Plus, there are even more benefits.

Please visit readingpublicmuseum.org and click on "Join and Support" for complete details and to join securely online.

The Museum Shop

Looking for a unique gift? You'll find handmade gifts, toys and games for children, exquisite jewelry, and more. Our stock is always changing, so stop in often to see our new items! Open during regular Museum hours (no admission required). Members receive 10% off every day!

Book a Group Visit

We're thrilled to welcome eager and attentive learners from Pre-K to Seniors on a daily basis. Group rates apply to 10 or more people. For more information or to book a group, contact wendy.koller@readingpublicmuseum.org.

Book Your Event

The Museum is home to Berks County's most treasured and distinctive wedding and event venues. Among our Fine Art Galleries, Neag Planetarium, and Stone Terrace Tent, we have a venue to accommodate every size and budget. For more information, please contact kara.seawell@readingpublicmuseum.org.

Museum Address/Phone

500 Museum Rd., Reading, PA 19611
610.371.5850

Museum Hours

Daily: 11am to 5pm
For Holiday hours, please check our website.

Museum Admission

\$10 Adult (18-64); \$6 Seniors/Children/College Students (w/ID); Members and Children 3 and under are free.

Planetarium Hours

Sun 1, 2, 3, & 4pm plus Weekday Shows at 2, 3, & 4pm (Mon–Fri with some exceptions).

Show prices (for each show):

\$8 Adults (18-64); \$6 Seniors/Children/College Students (w/ID); Members and Children 3 and under are free. Buy tickets at the Museum desk.